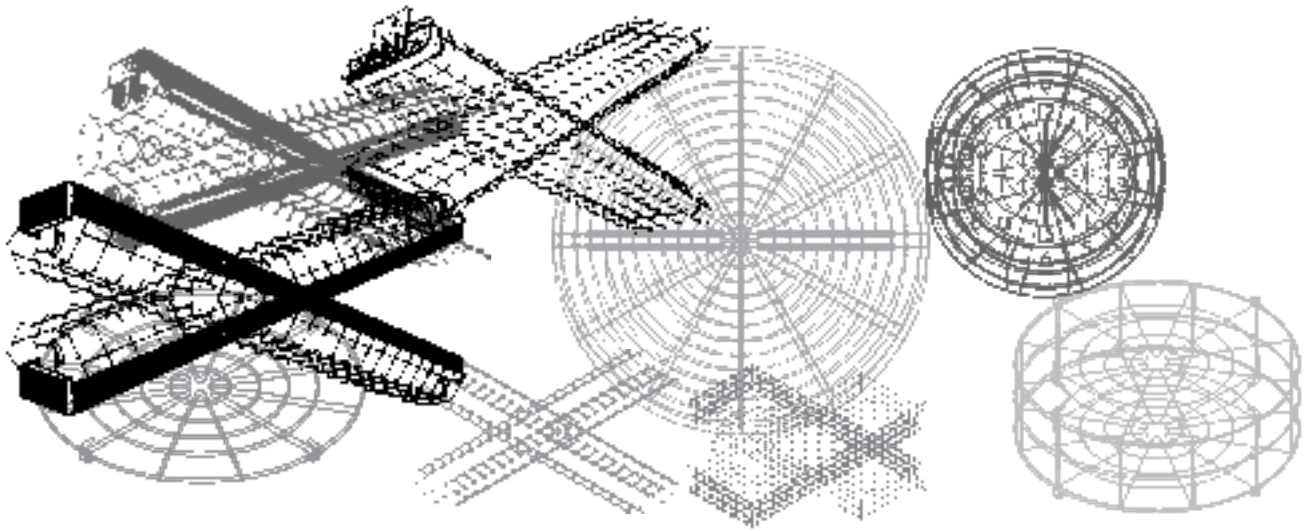


**Wire Guards**



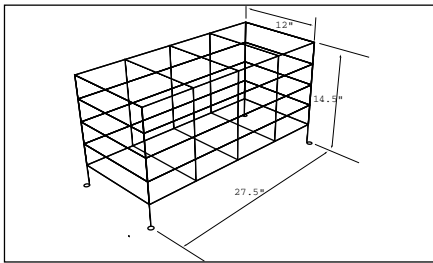
**FLUORESCENT LIGHTING  
FIXTURE PROTECTION**

**Product Description:**

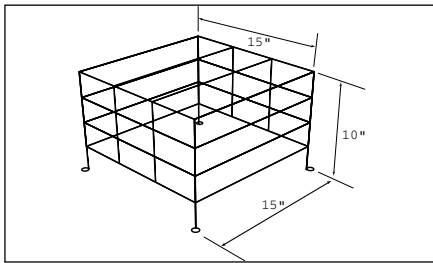
- \* Wire Guard™ units offer an inexpensive way to protect light fixtures from excessive abuse.
- \* Wire Guard™ units can be fabricated to fit most shapes of light fixtures. Standard sizes are in stock and ready for shipment.
- \* Other applications include exit signs, clocks and emergency lighting fixtures.

**/ Fluorescent lighting fixture protection /**

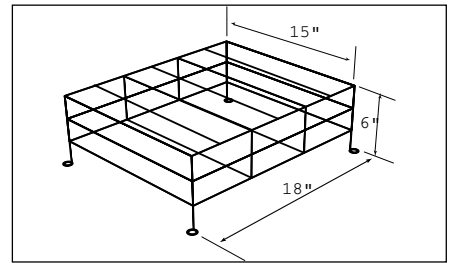
PART#	SIZE
C34-06	12" x 14 1/2" x 27 1/2"
C34-14	18" x 10" x 15"
C34-16	15" x 6" x 18"
C34-18	23" x 12" x 21"
C34-24	21" x 12" x 32"
C34-29	16" x 14" x 16"
C34-30	26" x 14" x 16"
C34-31	16" x 9" x 16"
C34-32	8" x 8" x 8"
C34-33	8" x 8" 16"
C34-34	13 3/4" x 4 3/8" x 13 3/8"
C34-35	4" x 16 3/4" x 13 5/8"
C34-36	14" x 8" x 27 1/2"
C34-38	15" x 6" x 21"



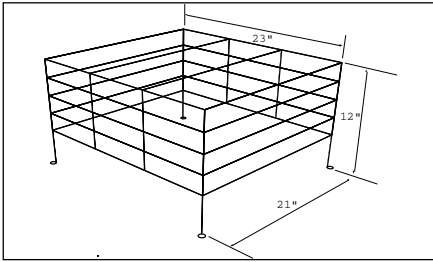
**C34-06**



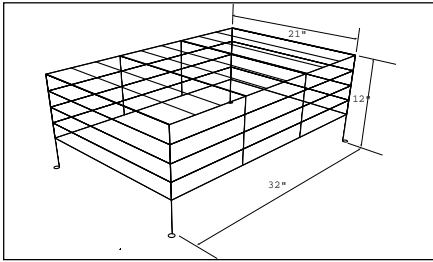
**C34-14**



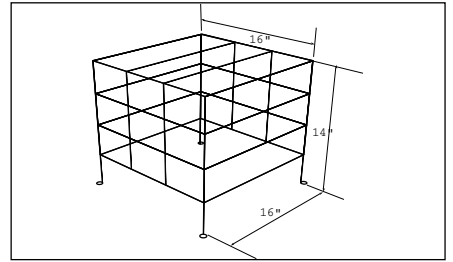
**C34-16**



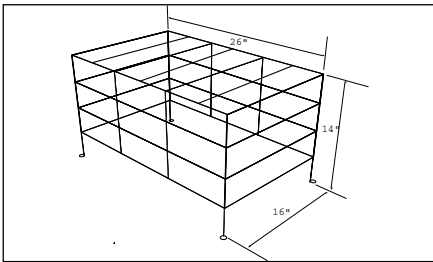
**C34-18**



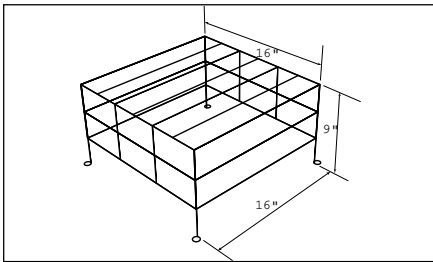
**C34-24**



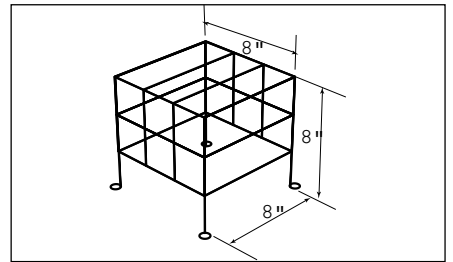
**C34-29**



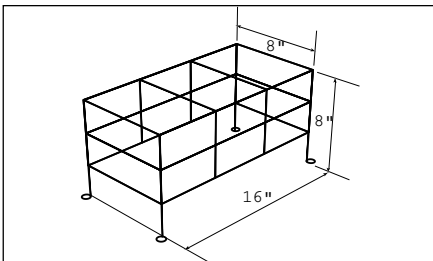
**C34-30**



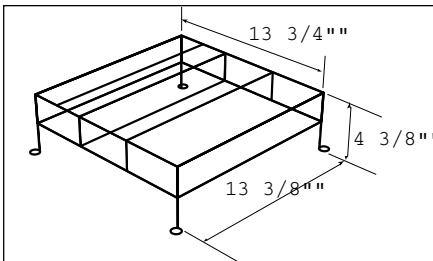
**C34-31**



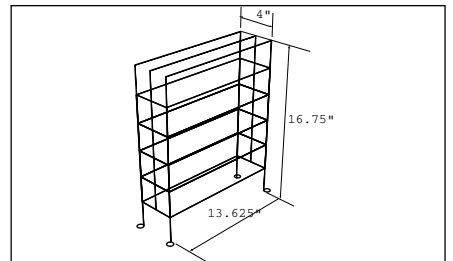
**C34-32**



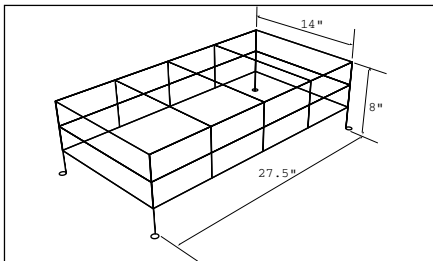
**C34-33**



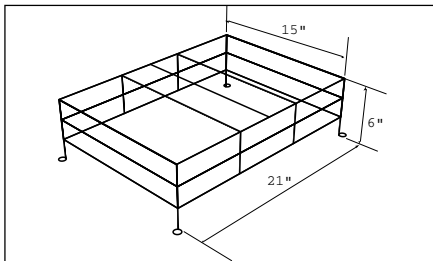
**C34-34**



**C34-35**



**C34-36**



**C34-38**

See dimensions on page 46.

**Wire Guards / LGWR-Reflector Type Guard**

**/ LGWR-Reflector Type Guard /**

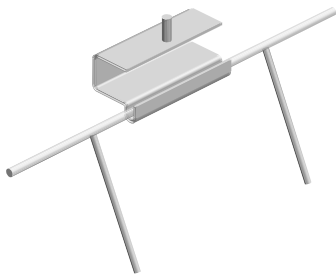
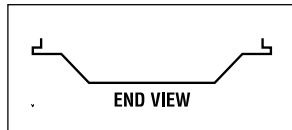
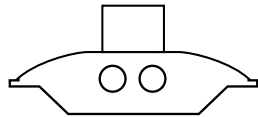
PART #	MAX REFLECTOR WIDTH	
12-LGWR-614C	10-12	[1/16 Gauge]
12-LGWR-611C	10-12	[1/8 Gauge]
14-LGWR-714C	12-14	[1/16 Gauge]
14-LGWR-711C	12-14	[1/8 Gauge]
16-LGWR-814C	14-16	[1/16 Gauge]
16-LGWR-811C	14-16	[1/8 Gauge]
18-LGWR-914C	16-18 1/2	[1/16 Gauge]
18-LGWR-911C	16-18 1/2	[1/8 Gauge]

**Product Description:**

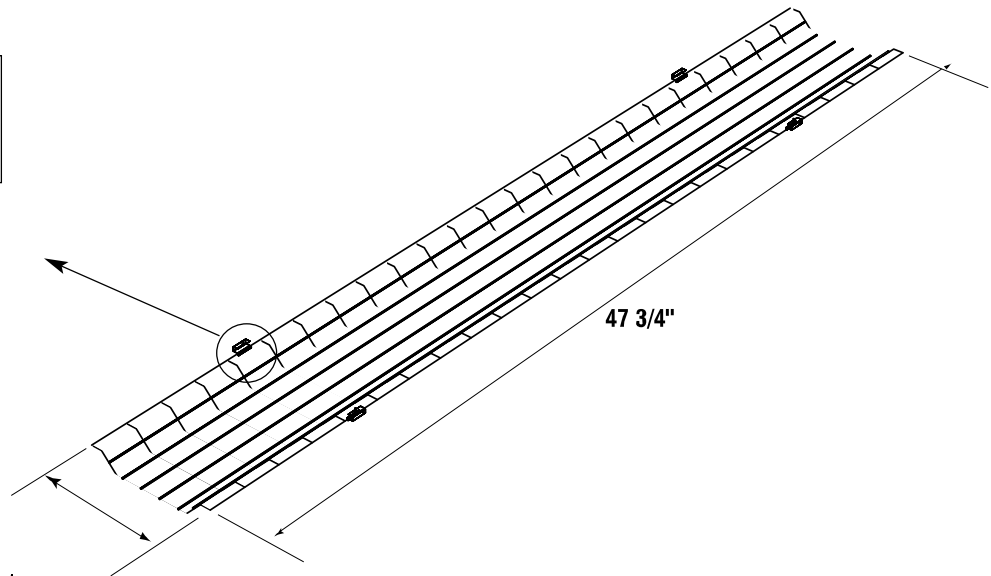
- \* Reflector guards are equipped with hinge clamps are standard equipment. When measuring reflector width – take inside measurements using the reflector measuring point guide.



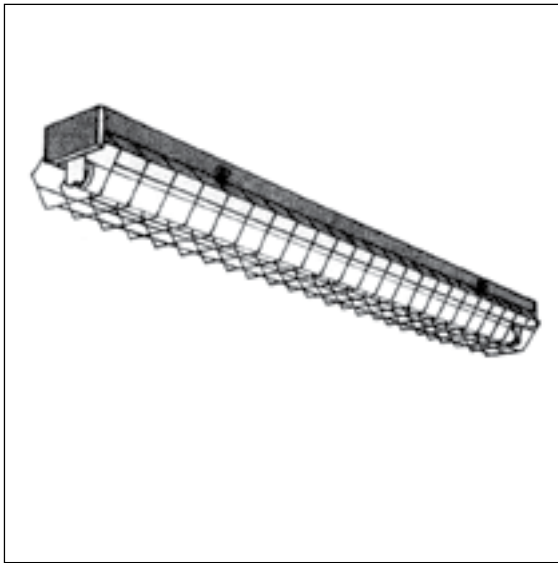
**LGWR REFLECTOR TYPE GUARD**



Attachment of Hinge clip



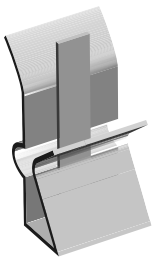
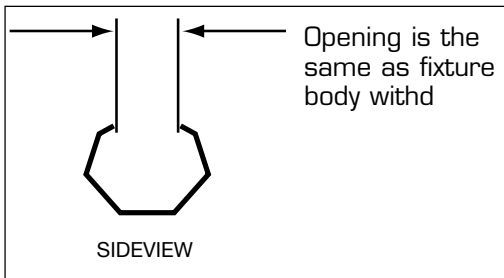
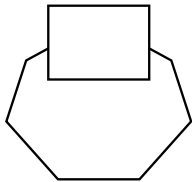
Reflector Width \_\_\_\_\_



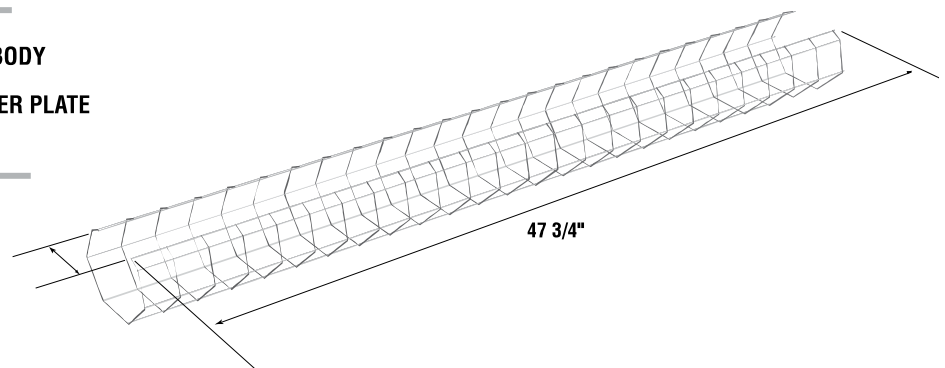
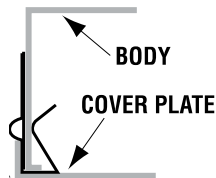
/ Strip Light Guard /

PART #	MAX REFLECTOR WIDTH
3-SLG-614C	2-3
3-SLG-611C	2-3
4-SLG-614C	3-4
4-SLG-611C	3-4
5.5-SLG-614C	4-5 1/2
5.5-SLG-611C	4-5 1/2
7.5-SLG-714C	5 1/2-7 1/2
7.5-SLG-711C	5 1/2-7 1/2
10-SLG-814C	7 1/2-10
10-SLG-811C	7 1/2-10
12-SLG-914C	10-12
12-SLG-911C	10-12

**STRIP LIGHT GUARD (SLG)**



Snap-on Hinge clip



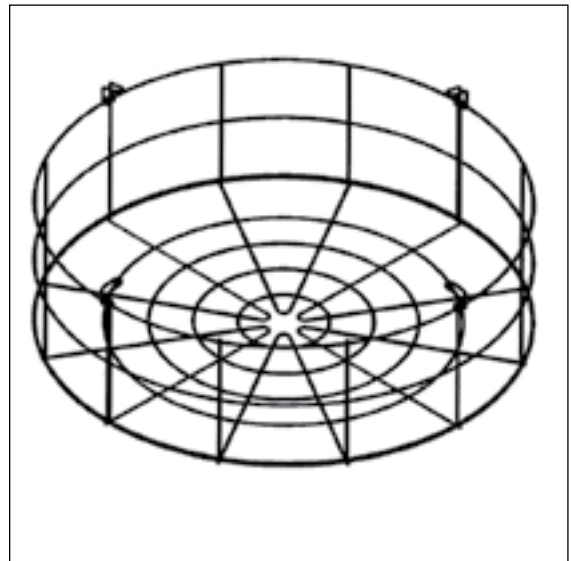
## Round Bay Lite Guards

### / Low Bay Wire Guards /

PART #	DIAMETER
02-LB12	12"
02-LB13	13"
02-LB14	14"
02-LB15	15"
02-LB16	16"
02-LB17	17"
02-LB18	18"
02-LB19	19"
02-LB20	20"
02-LB21	21"
02-LB22	22"
02-LB23	23"
02-LB24	24"

#### Product Description:

Low Bay Wire Guards are constructed with 11 gauge tempered steel wire resistance welded. Standard sizes range from 12" to 24" diameter in 1" increments. The standard guard depth is 5" for diffuser lens clearance. Other custom sizes are available upon request. Steel hinge clamps are permanently attached for easy mounting to reflector rim. Available in powder coated epoxy and polyester chrome or white finish. Other custom colors and finishes are available on special order. Coating is moisture and weather resistant.



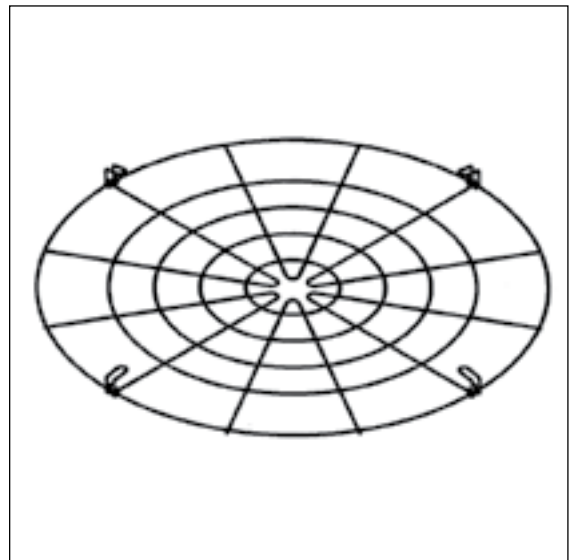
**LOW BAY WIRE GUARDS**

### / High Bay Wire Guards /

PART #	DIAMETER
02-HB12	12"
02-HB13	13"
02-HB14	14"
02-HB15	15"
02-HB16	16"
02-HB17	17"
02-HB18	18"
02-HB19	19"
02-HB20	20"
02-HB21	21"
02-HB22	22"
02-HB23	23"
02-HB24	24"

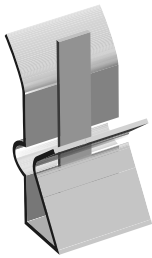
#### Product Description:

High Bay Wire Guards are constructed with 11 gauge tempered steel wire resistance welded. Standard sizes range from 12" to 24" diameter in 1" increments. The standard guard depth is 5" for diffuser lens clearance. Other custom sizes are available upon request. Steel hinge clamps are permanently attached for easy mounting to reflector rim. Available in powder coated epoxy and polyester chrome or white finish. Other custom colors and finishes are available on special order. Coating is moisture and weather resistant.



**HIGH BAY WIRE GUARDS**

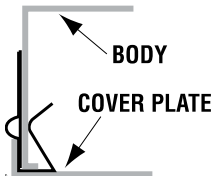
**Clips**



**STEEL CLIP FOR STRIP FIXTURES**

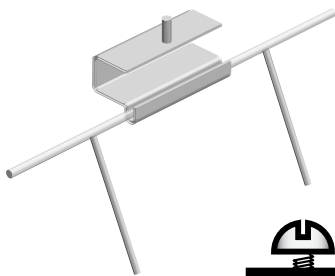
1. Slide the supplied 20 gauge tempered cold rolled hinge clips on to the strip housing per drawing. Use two clips per side placed approximately nine inches from each end.
2. Install strip cover plate and lamps.
3. Install LITE GARD fluorescent guard by inserting outside edgewire, one side at a time, into the hinge lock.

LITE GARD fluorescent guard will hinge down from either side by slightly prying on clip guides on one side of the fixture and pushing the guard edge wire up and out of the clip.



**STEEL HINGE CLAMPS FOR INDUSTRIAL REFLECTORS**

These clamps are bright zinc plated 20 gauge tempered cold rolled steel. Holes are tapped for the included 10-32 x 3/4" machine screws. Four hinge clamps, two per side, are permanently crimped on to the outside edge wire of the guard.



**NYLON SURFACE MOUNTING HINGE CLIP**

This clip is used to mount LITE GARD fluorescent guards directly to ceilings or to the sides of any fixture or reflector as per drawing. Fastening hardware (i.e. pop rivets, self tapping screws, nut and bolt, etc.) must be supplied by the user dependent upon installation requirements.

