

/ Acrylic Sheet /

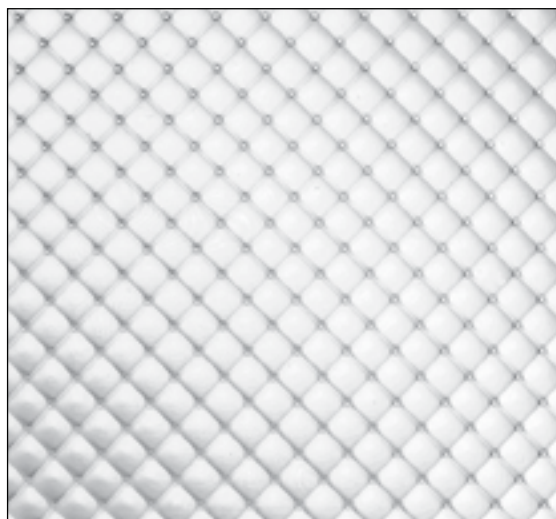
PART #	DESCRIPTION	COLOR	STANDARD SIZE
PS21-100-14	.100 Acrylic	Clear	11 3/4" x 47 3/4"
PS21-100-22	.100 Acrylic	Clear	23 3/4" x 23 3/4"
PS21-100-24	.100 Acrylic	Clear	23 3/4" x 47 3/4"
PS21-100-24-NS	.100 Acrylic	Clear	22 1/2" x 46 1/2"

PS21-110-14	.110 Acrylic	Clear	11 3/4" x 47 3/4"
PS21-110-22	.110 Acrylic	Clear	23 3/4" x 23 3/4"
PS21-110-24	.110 Acrylic	Clear	23 2/4" x 47 3/4"
PS21-110-44	.110 Acrylic	Clear	50" x 50"

PS21-125-14	.125 Acrylic	Clear	11 3/4" x 47 3/4"
PS21-W-125-14	.125 Acrylic	White	11 3/4" x 47 3/4"
PS21-125-14X	.125 Acrylic	Clear	12 1/2" x 54 1/2"
PS21-125-22	.125 Acrylic	Clear	23 3/4" x 23 3/4"
PS21-W-125-22	.125 Acrylic	White	23 3/4" x 23 3/4"
PS21-125-22X	.125 Acrylic	Clear	25" x 25"
PS21-125-24	.125 Acrylic	Clear	23 3/4" x 47 3/4"
PS21-125-24-NS	.125 Acrylic	Clear	22 1/2" x 46 1/2"
PS21-W-125-24	.125 Acrylic	White	23 3/4" x 47 3/4"
PS21-125-24X	.125 Acrylic	Clear	25" x 54 1/2"
PS21-125 44X	.125 Acrylic	Clear	50" x 56"
PS21-125-50X	.125 Acrylic	Clear	50" x 100"

PS21- 135 44X	.135 Acrylic	Clear	50" x 54 1/2"

PS21- 187 44X	.187 Acrylic	Clear	48" x 96"



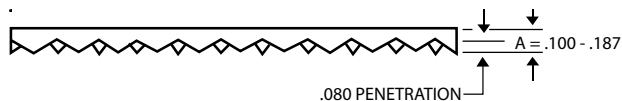
PS21 ACRYLIC SHEET

PS21-XX XX Custom Sizes Available! Call with your requirements.

Product Description:

- ✦ Most popular pattern consisting of uniform array of 3/16" square base, female conical prism on a 45° axis.
- ✦ Industry standard, offering maximum efficiency with moderate glare control.
- ✦ Manufactured from 100% virgin acrylic. Under normal conditions, acrylic panels will perform satisfactorily for 20 years.

PROFILE



Remember...
Most light fixtures require the lens to be cut to size to fit into the door frame. Just specify the existing lens size, or tell us the fixture make and model number and we'll cut to fit.

Non-standard sizes are available.

Give us a call for a quote!

*Minimum quantities and/or set up charges may apply. Please call for a quotation.



PS21 POLYCARBONATE

/ Polycarbonate /

PART #	DESCRIPTION	COLOR	STANDARD SIZE
PS21-PC-125-14	.125 Polycarbonate	Clear	11 3/4" x 47 3/4"
PS21-PC-125-22	.125 Polycarbonate	Clear	23 3/4" x 23 3/4"
PS21-PC-125-24	.125 Polycarbonate	Clear	23 3/4" x 47 3/4"
PS21-PC-125-44X	.125 Polycarbonate	Clear	50" x 50"

PS21-PC-125-XX Custom Sizes Available! Call with your requirements.

Product Description:

- * Virtually indestructible material, suitable for applications where impact strength is of major concern such as security lighting, vandal fixtures, prisons, sport courts, outdoor lighting, etc.



PS21 HI - IMPACT ACRYLIC

/ Hi-Impact Acrylic /

PART #	DESCRIPTION	COLOR	STANDARD SIZE
PS21-HI-125-14	.125 Hi-Impact Acrylic	Clear	11 3/4" x 47 3/4"
PS21-HI-125-22	.125 Hi-Impact Acrylic	Clear	23 3/4" x 23 3/4"
PS21-HI-125-24	.125 Hi-Impact Acrylic	Clear	23 3/4" x 47 3/4"
PS21-HI-125-44X	.125 HI-Impact Acrylic	Clear	50" x 50"

PS21-HI-125-XX Custom Sizes Available! Call with your requirements.

Product Description:

- * Approximately 10 times stronger than acrylic.
- * Used in applications where impact strength is important such as vaporproof units, outdoor fixtures and vandal resistant lenses.

*Minimum quantities and/or set up charges may apply. Please call for a quotation.

/ Languard® Security Lens /

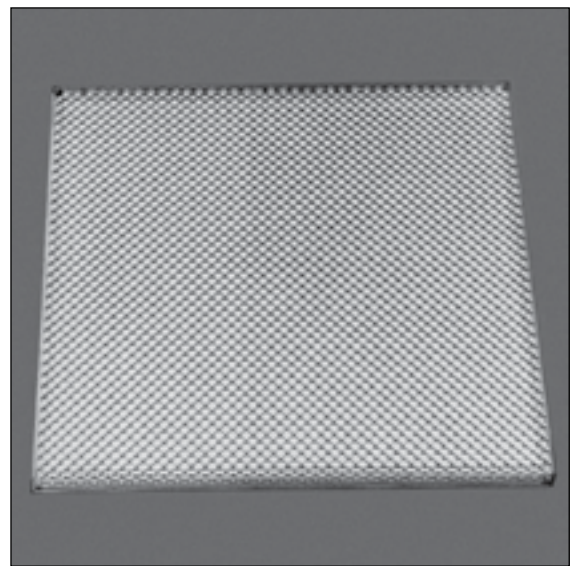
PART #	DESCRIPTION	COLOR	STANDARD SIZE
X21-PA250-237477	.250 Security Lens	Clear	23 3/4" x 47 3/4"
X21-PA375-237477	.375 Security Lens	Clear	23 3/4" x 47 3/4"

X21-P375 XX Custom Sizes Available! Call with your requirements.

Product Description:

- * Composite lens consisting of a prismatic acrylic lens and a protective polycarbonate shielding. The perimeter of the lens is sealed by a specially designed channel which is chemically welded.
- * Designed for areas where vandalism or accidental damage may be a problem. It is used in different applications such as school gymnasiums, racket ball courts, psychiatric wards, detention facilities, public areas, etc.

PROFILE



LENSGUARD® SECURITY LENS

* Minimum quantities and/or set up charges may apply. Please call for a quotation.

/ P15 Prismatic Sheet /

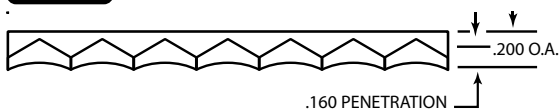
PART #	DESCRIPTION	COLOR	MAX CUT SIZE
P15-200-14	.200 Acrylic	Clear	11 3/4" x 47 3/4"
P15-200-22	.200 Acrylic	Clear	23 3/4" x 23 3/4"
P15-200-24	.200 Acrylic	Clear	23 3/4" x 47 3/4"
P15-200-44X	.200 Acrylic	Clear	47 3/4" x 47 3/4"

P15-200-XX Custom Sizes Available! Call with your requirements.

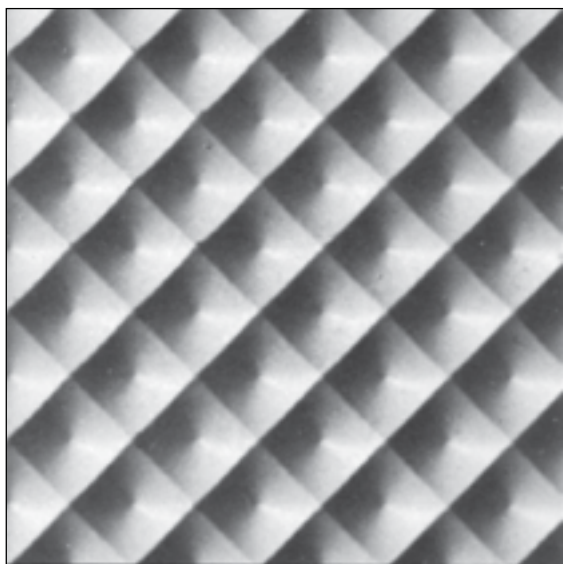
Product Description:

- * 3/8" square based female conical prisms placed parallel and perpendicular to the length and width of the panel.
- * .200 thickness provides rigid structural characteristics for areas up to 4' x 4'.
- * Applications include frameless fixtures and large areas requiring no objectionable sagging.

PROFILE



P15 PRISMATIC SHEET



PS35 PRISMATIC SHEET

/ PS35 Prismatic Sheet /

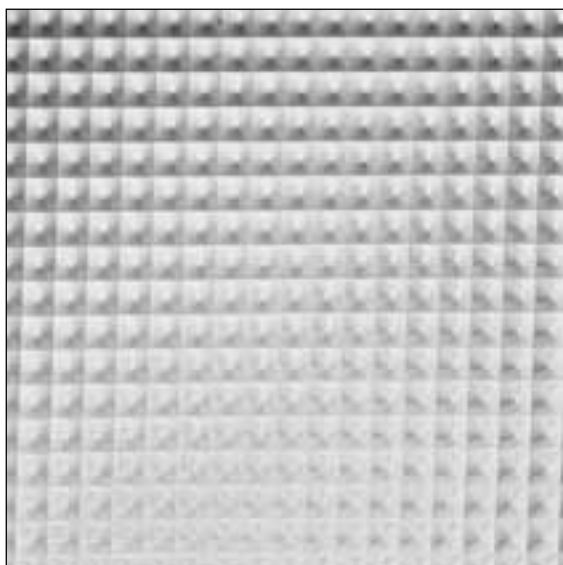
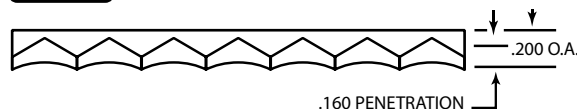
PART #	DESCRIPTION	COLOR	MAX CUT SIZE
PS35-200-14	.200 Acrylic	Clear	11 3/4" x 47 3/4"
PS35-200-14X	.200 Acrylic	Clear	12" x 50"
PS35-200-22	.200 Acrylic	Clear	23 3/4" x 23 3/4"
PS35-200-22X	.200 Acrylic	Clear	24 1/8" x 24 7/8"
PS35-200-24	.200 Acrylic	Clear	23 3/4" x 47 3/4"
PS35-200-24X	.200 Acrylic	Clear	24 1/8" x 50"
PS35-200-44X	.200 Acrylic	Clear	48 1/2" x 50"

PS35-200-XX Custom Sizes Available! Call with your requirements.

Product Description:

- * Distinctive pattern consisting of uniform array of 3/8" square base, female conical prism on a 45° axis.
- * .200 thickness provides rigid structural characteristics for areas up to 4' x 4'.
- * Applications include frameless fixtures and large areas requiring no objectionable sagging.

PROFILE



PS49 PRISMATIC SHEET

/ PS49 Prismatic Sheet /

PART #	DESCRIPTION	COLOR	STANDARD SIZE
PS49-150-14	.150 Acrylic	Clear	11 3/4" x 47 3/4"
PS49-150-22	.150 Acrylic	Clear	23 3/4" x 23 3/4"
PS49-150-24	.150 Acrylic	Clear	23 3/4" x 47 3/4"
PS49-150-44	.150 Acrylic	Clear	47 3/4" x 47 3/4"

Product Description:

- * Prismatic pattern consisting of 3/16" square base, male conical prism placed parallel and perpendicular to the length and width of the panel.
- * Suggested for use in commercial applications requiring high efficiency combined with high angle brightness control.
- * Material options include .187 thickness, radio frequency interference (RFI) and silver tint colors.

PROFILE



Panel sizes and thicknesses shown are stock items.
Other thicknesses, sheet sizes and colors are available. Please call for a quotation.

/ K23 Prismatic Sheet /

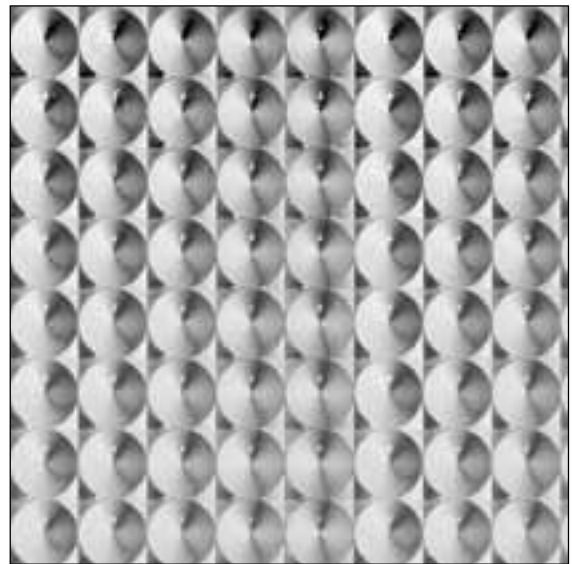
PART #	DESCRIPTION	COLOR	SIZE
K23-100-14	.100 Acrylic	Clear	11 3/4" x 47 3/4"
K23-100-22	.100 Acrylic	Clear	23 3/4" x 23 3/4"
K23-100-24	.100 Acrylic	Clear	23 3/4" x 47 3/4"

K23UVBWF-100-24	.100 Acrylic	Amber	23 3/4" x 47 3/4"

Also available in .125 thickness. (Substitute “.125” in place of “.100”.)

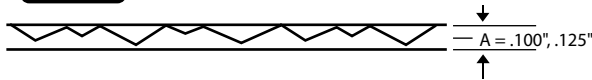
Product Description:

- * Female conical prisms with 3/8" circular base parallel to the sides of the diffuser.
- * Truss shaped prism design means no sagging lenses.
- * Constructed in either .100 or .125 thickness.
- * Available in gold tint specially formulated to eliminate ultraviolet and blue wave length transmission up to approximately 480 nanometers. Applications include graphic arts, printed circuit and plating companies.
- * MINIMUM QUANTITY NEEDED TO ORDER. CALL FOR QUOTE.

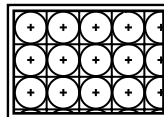


K23 PRISMATIC SHEET

PROFILE



DESIGN



/ Plexiglass Sheet / Acrylic / Polycarbonate /

PART #	DESCRIPTION	COLOR	SIZE
2447-1/8-4896	.125 Acrylic	White	54" x 108"
2447-3/16-4896	.187 Acrylic	White	48" x 96"
2447-1/4-4896	.250 Acrylic	White	48" x 96"

CA-1/8-4896	.125 Acrylic	Clear	51" x 100"
CA-3/16-4896	.187 Acrylic	Clear	48" x 96"
CA-1/4-4896	.250 Acrylic	Clear	48" x 96"

CP-1/8-4896	.125 Polycarbonate	Clear	48" x 96"
CP-3/16-4896	.187 Polycarbonate	Clear	48" x 96"
CP-1/4-4896	.250 Polycarbonate	Clear	48" x 96"

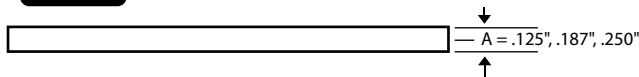
Product Description:

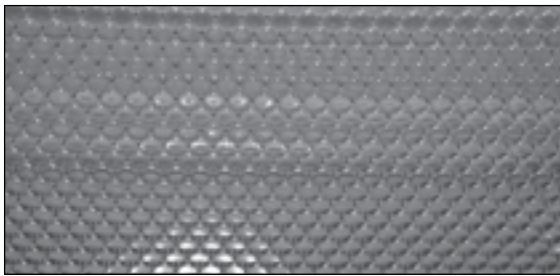
- * Translucent panels offer excellent light dispersion
- * Available in 100% acrylic and polycarbonate
- * Available in large sheet sizes to accommodate large openings and other special requirements.
- * Clear panels offer window clear visibility, making this material ideal for display cases or protective enclosures.



PLEXIGLASS SHEET

PROFILE





HOLOPHANE® CONTROL LENS

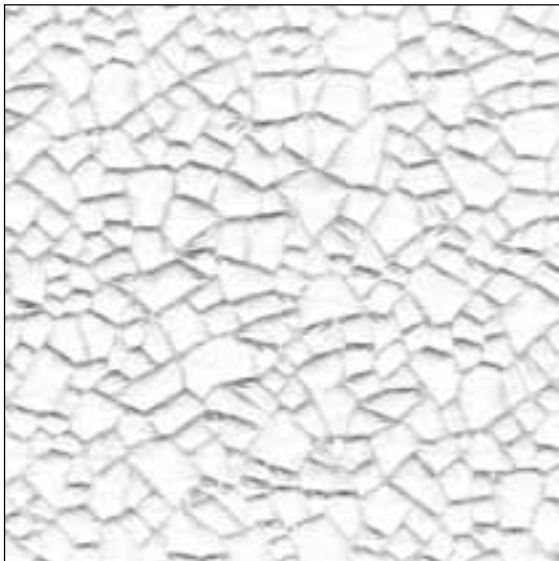
/ Holophane® Control Lens /

PART #	DESCRIPTION	COLOR	SIZES
HOL-8224	.240 Acrylic	Clear	23 3/4 x 47 3/4
HOL-8246	.280 Acrylic with overlay	Clear/White	23 3/4 x 47 3/4
HOL-8248	.280 Acrylic with overlay	Clear	23 3/4 x 47 3/4

Product Description:

- * The patented Refractive Grid uses a refracting hemispherical prism and technology similar to the light piping of fiber optics to intercept and return high angle light back into the fixture for another chance to get out as useful light. Output in the 0-70° zone is higher than any other optical control device. Glare is reduced by up to 80%.
- * Suggested for use in offices, computer rooms, classrooms, hospitals, nursing homes, stores, and retrofit installations.
- * Available with a radio frequency shielding grid or UV blocking interface.

PROFILE



PS100 CRACKED ICE

/ Cracked Ice /

PART #	DESCRIPTION	COLOR	MAX CUT SIZE
PS100-24-C	.080 Acrylic	Clear	23 3/4" x 47 3/4"
PS100-24-W	.080 Acrylic	White	23 3/4" x 47 3/4"
PS100-24-WS	.065 Styrene	White	23 3/4" x 47 3/4"

Product Description:

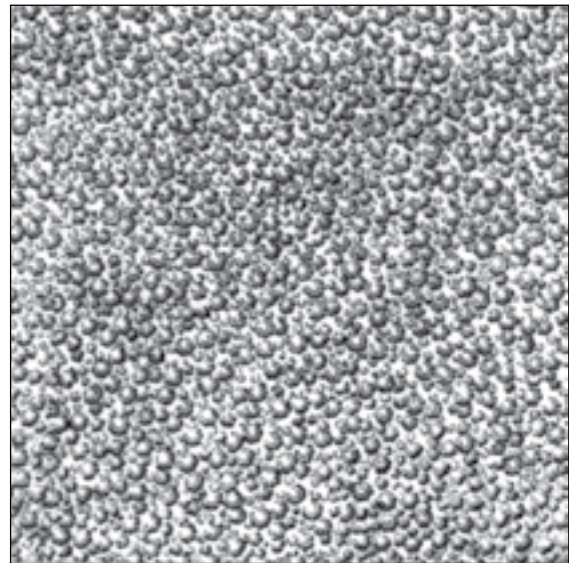
- * Cracked ice pattern has male ice-like chips of various shapes and sizes.
- * Offers sparkle and brilliance while providing excellent lamp obscuration.
- * Applications include luminous ceilings, valences and residential areas.
- * Available in clear and white.

PROFILE



/ Smooth/Stipple /

PART #	DESCRIPTION	COLOR	STANDARD SIZE
S821IW-020-44X	.020 Acrylic	White	50" x 50"
PS81-040-14	.040 Acrylic	White	11 3/4" x 47 3/4"
PS81-040-22	.040 Acrylic	White	23 3/4" x 23 3/4"
PS81-040-24	.040 Acrylic	White	23 3/4" x 47 3/4"
PS81-C-040-14	.040 Acrylic	Clear	11 3/4" x 47 3/4"
PS81-C-040-22	.040 Acrylic	Clear	23 3/4" x 47 3/4"
PS81-C-040-24	.040 Acrylic	Clear	23 3/4" x 47 3/4"
PS81-060-14	.060 Acrylic	White	11 3/4" x 47 3/4"
PS81-060-22	.060 Acrylic	White	23 3/4" x 23 3/4"
PS81-060-24	.060 Acrylic	White	23 3/4" x 47 3/4"
PS81-060-44X	.060 Acrylic	White	50" x 50"
PS81-080-14	.080 Acrylic	White	11 3/4" x 47 3/4"
PS81-080-22	.080 Acrylic	White	23 3/4" x 23 3/4"
PS81-080-24	.080 Acrylic	White	23 3/4" x 47 3/4"
PS81-080-44X	.080 Acrylic	White	50" x 55"
PS81-125-14	.125 Acrylic	White	11 3/4" x 47 3/4"
PS81-125-22	.125 Acrylic	White	23 3/4" x 23 3/4"
PS81-125-24	.125 Acrylic	White	23 3/4" x 47 3/4"
PS81-C-125-28	.125 Acrylic	Clear	27 x 103

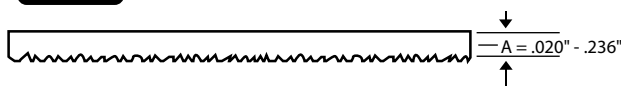


PS81 SMOOTH/STIPPLE

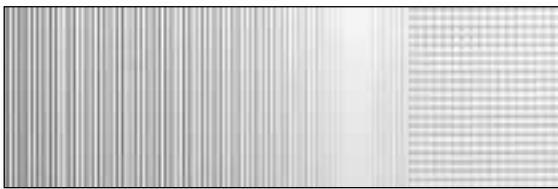
Product Description:

- * Panels consist of a smooth reflective side and a textured side, providing a fine mechanical finish with excellent hiding power.
- * Applications include overlay panels, luminous ceilings, residential and commercial applications.
- * Hi-Impact and polycarbonate materials are available.
- * A variety of thicknesses from .020 to .236 are available to meet your requirements.

PROFILE



Remember...
 Most light fixtures require the lens to be cut to size to fit into the door frame. Just specify the existing lens size, or tell us the fixture make and model number and we'll cut to fit.
 Non-standard sizes are available.
 Give us a call for a quote!



KSH3® SPECIALTY LENS

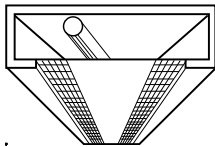
/ KSH3® Specialty Lens /

PART #	DESCRIPTION	COLOR	STANDARD SIZE
KSH3-AF-14-STD	Acrylic	Clear	11 3/4" x 47 3/4"

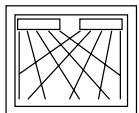
Product Description:

- * Provides asymmetric light distribution.
- * Available in 1 x 4 panel sizes.
- * Ideal for small offices, hospital bed lights, blackboard/white board lighting in classrooms, boardrooms and corridor lighting from the perimeter.
- * Will perform satisfactorily for 20 years under normal interior conditions.

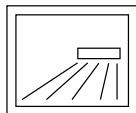
PROFILE



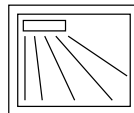
EXAMPLES



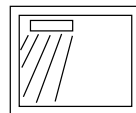
Small offices



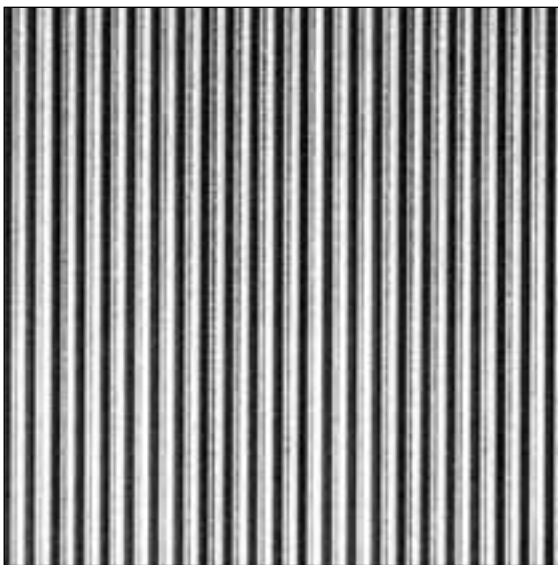
Hospital bed lights



Corridors



Classroom Boardr



KSH25® SPECIALTY LENS

/ KSH25® Specialty Lens /

PART #	DESCRIPTION	COLOR	STANDARD SIZE
K25-100-24A	.115 Acrylic A-Fab	Clear	23 3/4" x 47 3/4"
K25-100-24B	.115 Acrylic B-Fab	Clear	23 3/4" x 47 3/4"
K25-100-44A	.115 Acrylic A-Fab	Clear	47 3/4" x 47 3/4"
K25-100-44B	.115 Acrylic B-Fab	Clear	47 3/4" x 47 3/4"

Product Description:

- * Linear ribbed lenses with a 90 ° angle on 1/8" centers.
- * Panels are furnished with ribs running parallel to the lamp axis ("B" Fab).
- * Applications include areas where broad distribution is required and direct glare is not a problem ("A" Fab), task lighting and under the counter applications ("B" Fab).

